

MFP Server

Quick Installation Guide

Version: 1.0
(February, 2006)

1. Product Introduction

Thank you for purchasing and using our MFP server. This MFP server allows your Multi-function, all-in-one printer (called for short: MFP) or printer to become a shared device on the network. Unlike many print servers, it can communicate with MFP and printer as if it is connected directly to your computer. Because of the features, all users can share print, scan and card reader functions through the network. Furthermore, the MFP Server can build the bi-directional communication with MFPs and Printers so that it can help to monitor important information such as ink levels and paper levels.

The MFP server supports print, scan and card reader sharing functions in the most popular operating systems: Windows 2000 SP4 above and XP SP1 above. It also supports Windows XP scanning utility and MFP vendors' scanning utilities. When you want to scan in the Windows XP, you can choose one of the utilities.

Not only be a MFP Server, this MFP Server can also be a traditional print server. It supports TCP/IP network protocol and LPR, RAW and IPP printing protocols. It can share print function in the various common network operating systems including Windows 98SE/Me/NT/2000/XP/2003, Unix, Linux and MAC OS 9.x above.

The MFP server is the best solution for users to share MFP or printer conveniently and easily. It offers the most flexibility and manageability for MFP or printer on your Local Area Network at an extremely low cost and with an absolute minimum setup and maintenance required.

2. Product Package

This package contains the following components:

- One MFP Server
- One Antenna (Only for Wireless MFP Server)
- One Power Adapter
- One Quick Installation Guide
- One CD-ROM (Including all the software utilities, drivers and User's Manual)

3. Getting Started

Before you start, you should have:

- One computer with Windows 2000 SP4 above and Windows XP SP1 above
- One MFP or printer with USB port and an installation CD
- One Category 5 Ethernet Cable
- One USB Cable

3.1 Hardware Installation Procedure

1. Unpack the MFP Server package and verify that all the items listed in the previous section are provided.
2. Plug the USB cable to the MFP Server with the MFP or printer that you want to share on the network.
3. Connect the MFP Server to your network by attached the network cable to the network port of the MFP server.
4. Connect the power adapter to the MFP Server. The MFP Server will perform the Power-On-Self-Test (POST) after it is powered on. When the Status LED is unlighted, the MFP Server is ready.

Note:

1. ***You must use the power adapter shipped along with the MFP Server, do NOT use any other power adapter from other sources.***

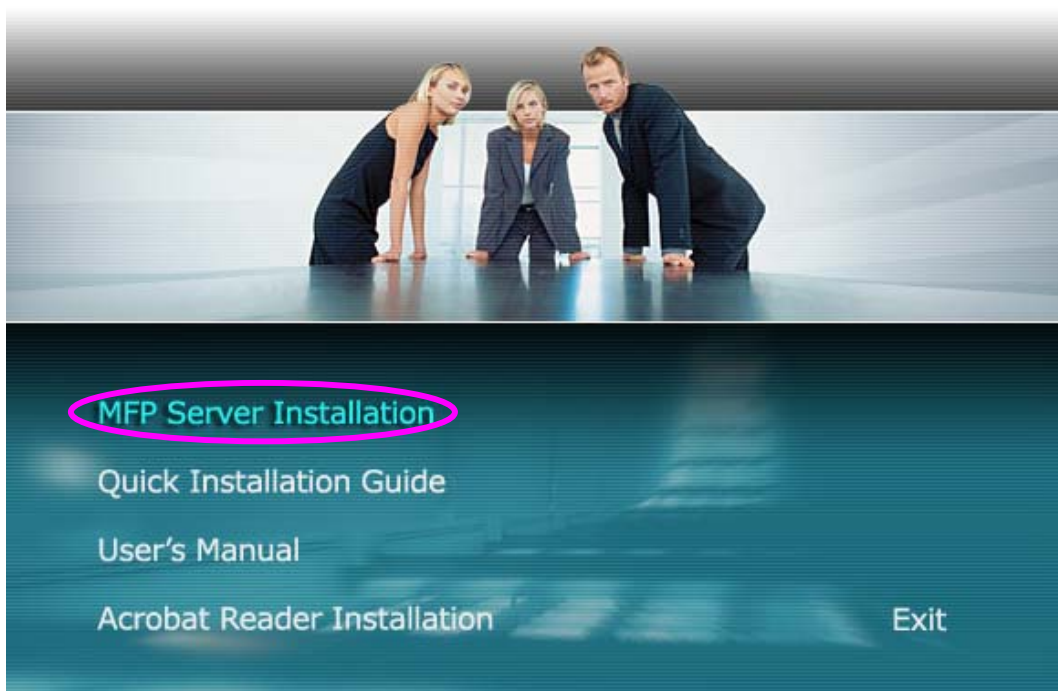
2. ***To prevent the compatibility problem between MFP Server and a few MFP or printer, it is recommended that you power on the MFP Server before the MFP or printer.***

3.2 Software Installation Procedure

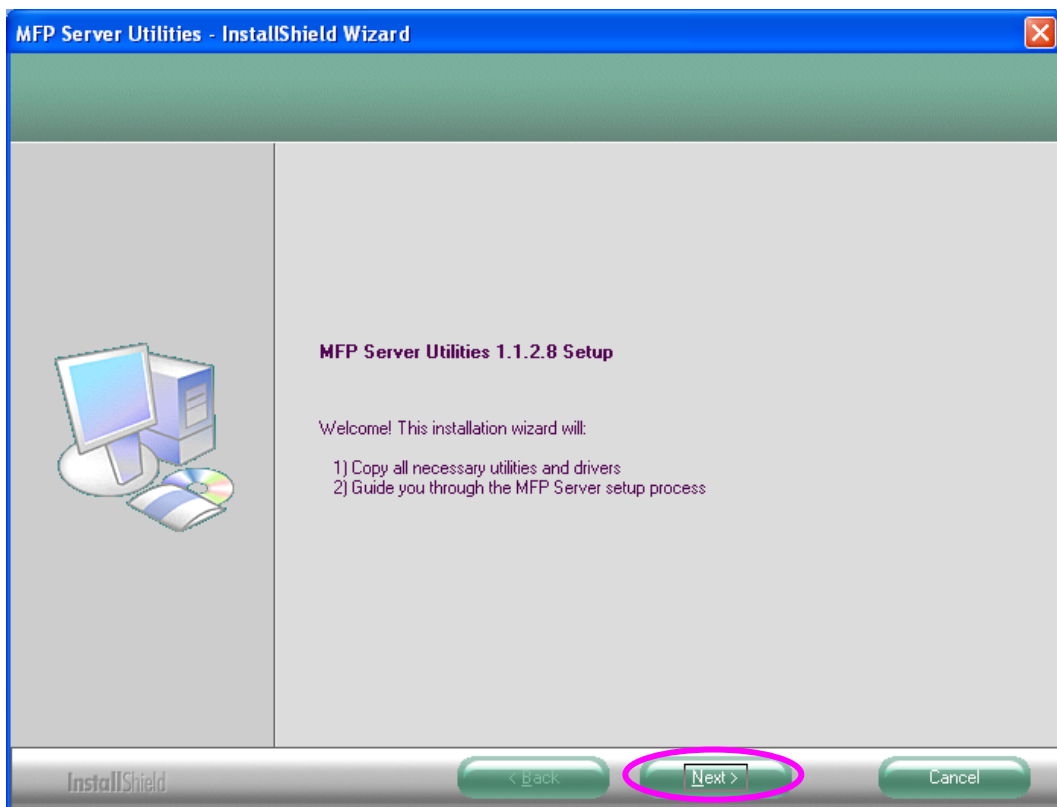
Before you start, you should check your computer's operating system. This program can be run in Windows 2000 SP4 above and Windows XP SP1 above. Please follow the steps below to start installation. For the installation procedures in Windows 98SE/ME/NT and other operating systems, please refer to the manual of the MFP Server.

Tip: You have to uninstall all the MFP server drivers and utilities if you have installed the previous version.

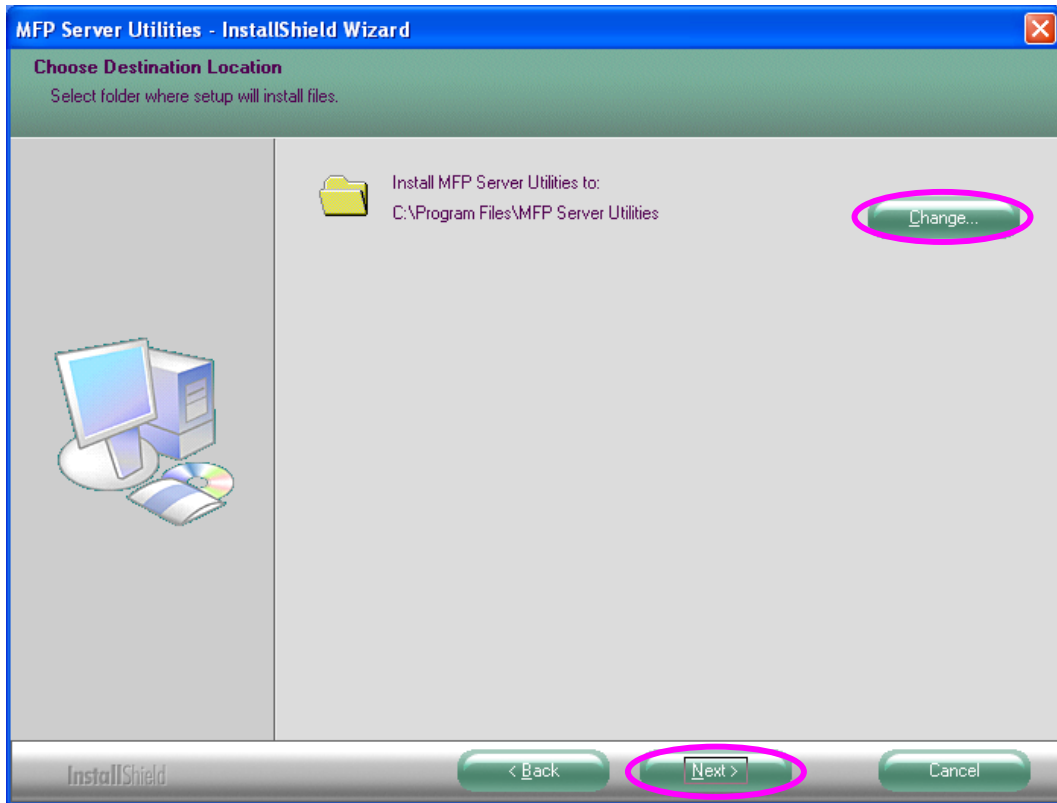
1. Insert the CD shipped along with the MFP Server into your CD-ROM drive. The Autorun.exe program should be executed automatically. If not, run Autorun.exe manually from CD-ROM drive's root directory
2. The following screen will be displayed. Click "MFP Server Installation".



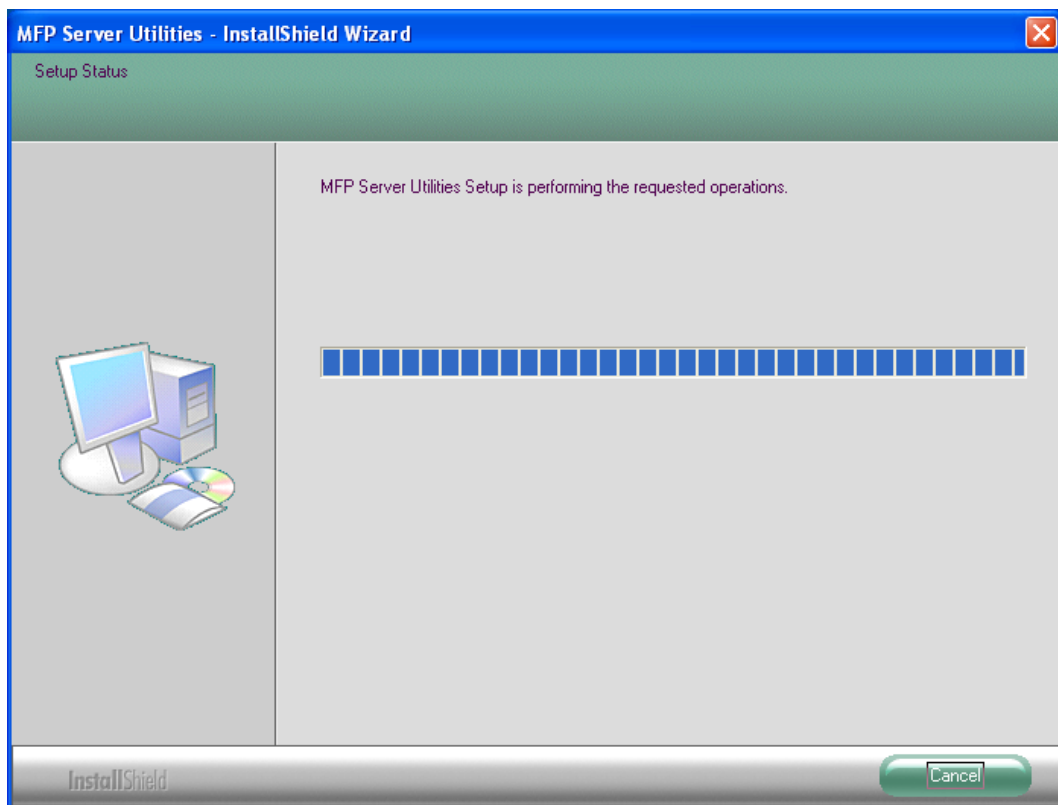
3. The “MFP Server Utilities - InstallShield Wizard” is displayed, click "Next".



4. Click "Next" to install the MFP Server utilities in the default folder or click "Change" to specify the destination folder where you would like to install the MFP Server utilities.

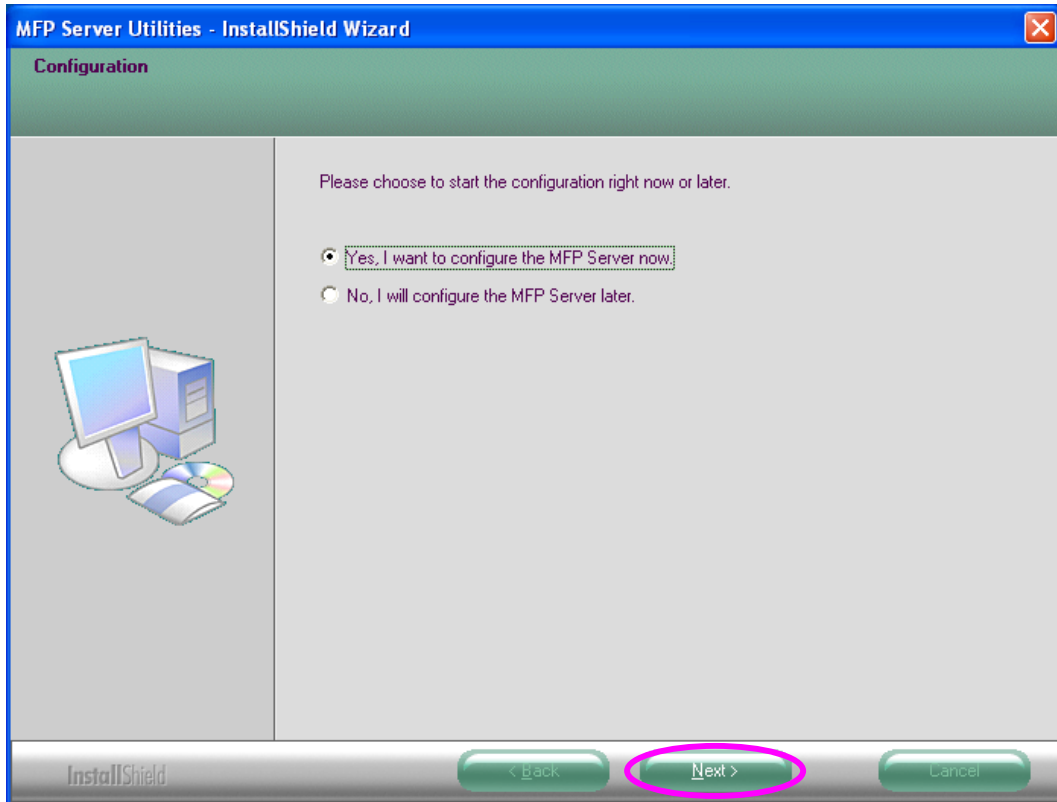


5. The system starts installing the MFP Server Utilities.

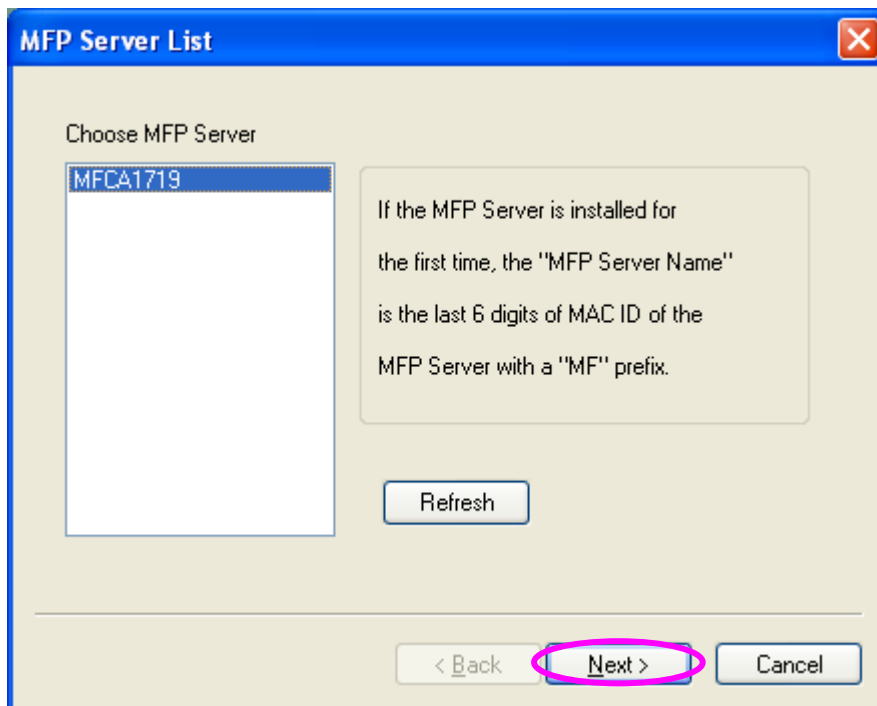


6. The “MFP Server Configuration” screen is displayed. If you want to configure the MFP Server, please click “Next” directly. Or you can select “No, I will configure the MFP Server later” and click “Next” to complete the installation.

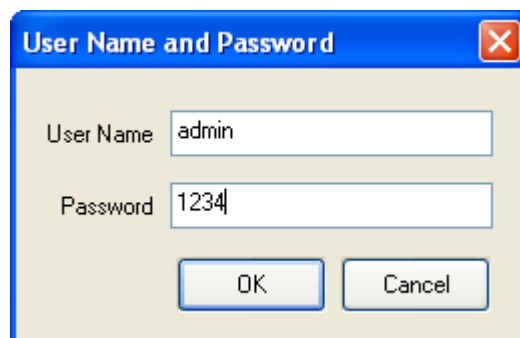
The following steps are for MFP Server Configuration.



7. The MFP Server List will auto search the MFP Servers in the network. Select the MFP Server you want to setup and click “Next” to continue.



8. Enter the “User Name” and “Password” of the MFP Server you have selected to login the MFP Server. The default “User Name” is “admin”; default “Password” is “1234.”



9. Set the "Alias Name" and the "MFP Server Description" to the MFP Server here. Click on "Next".

Note: You can define the location or other information of the MFP Server for easy to find the MFP by filling "MFP Server Description".

Name the MFP Server

Device Name: MFCA1719
The unique serial number of the MFP Server

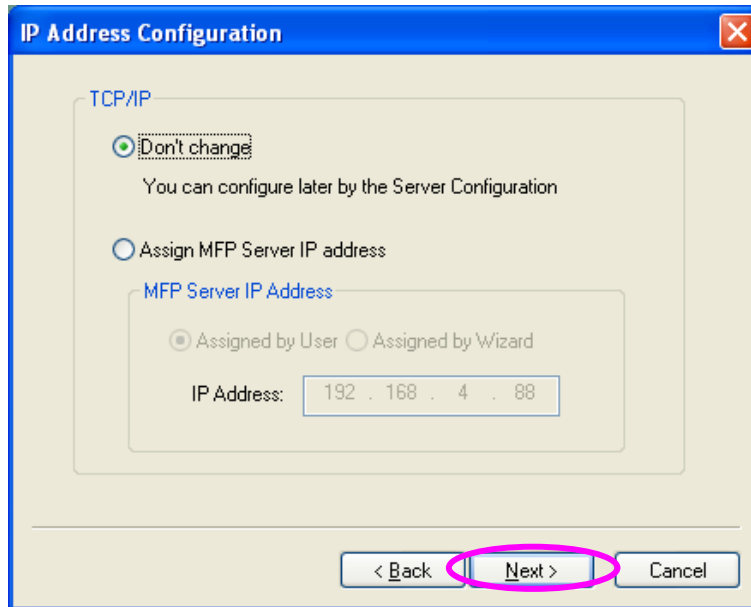
Alias Name: MFCA1719
An alternative name for easy management

MFP Server Description:
Enter 15-digit description of the MFP Server
such as location or other information

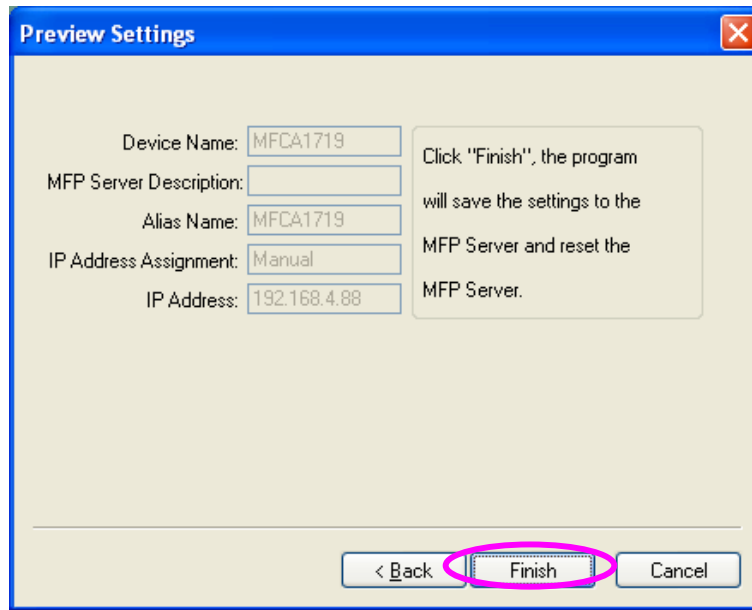
< Back **Next >** Cancel

10. Setup the IP address of the MFP Server and click “Next”.

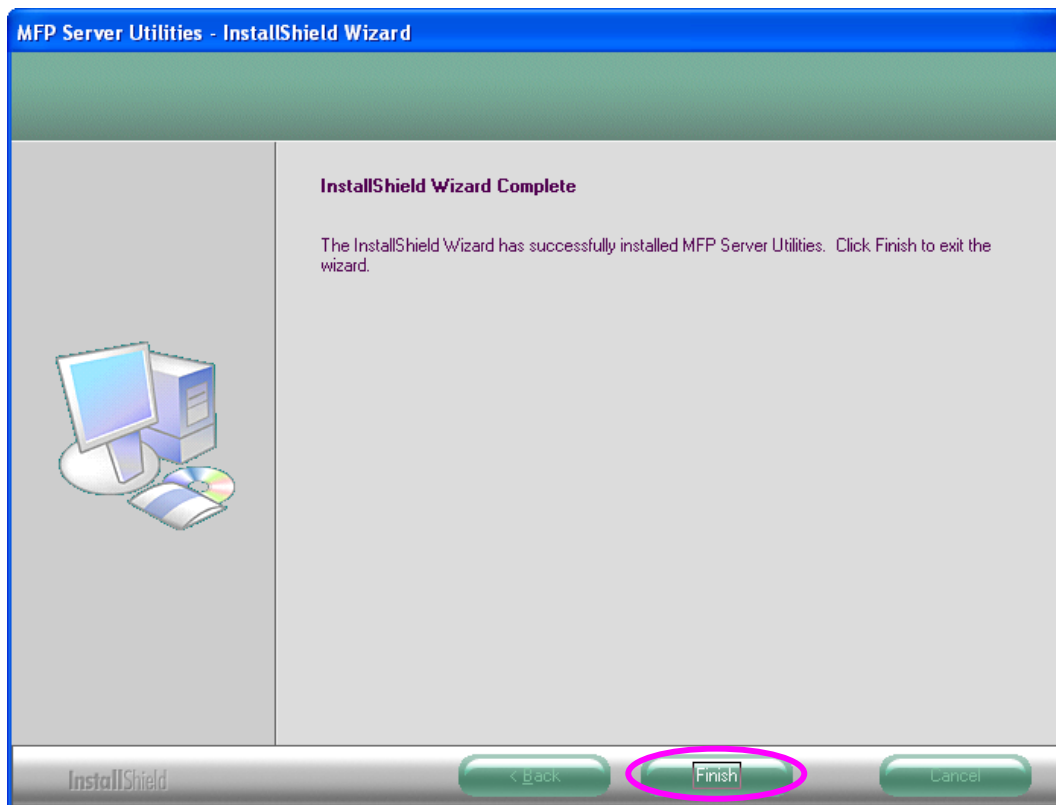
Note: The MFP Server IP Address should be in the same network segment with the connected computer. If you are not sure how to set up the IP Address, you are recommended to select “Assign MFP Server IP Address” and choose “Assigned by Wizard”, and then the program will assign a valid IP Address to you.



11. The configurations are finished. Please click “Finish” to apply new settings.



12. Click “Finish” to complete the installation.



3.2 MFP Server Utilities

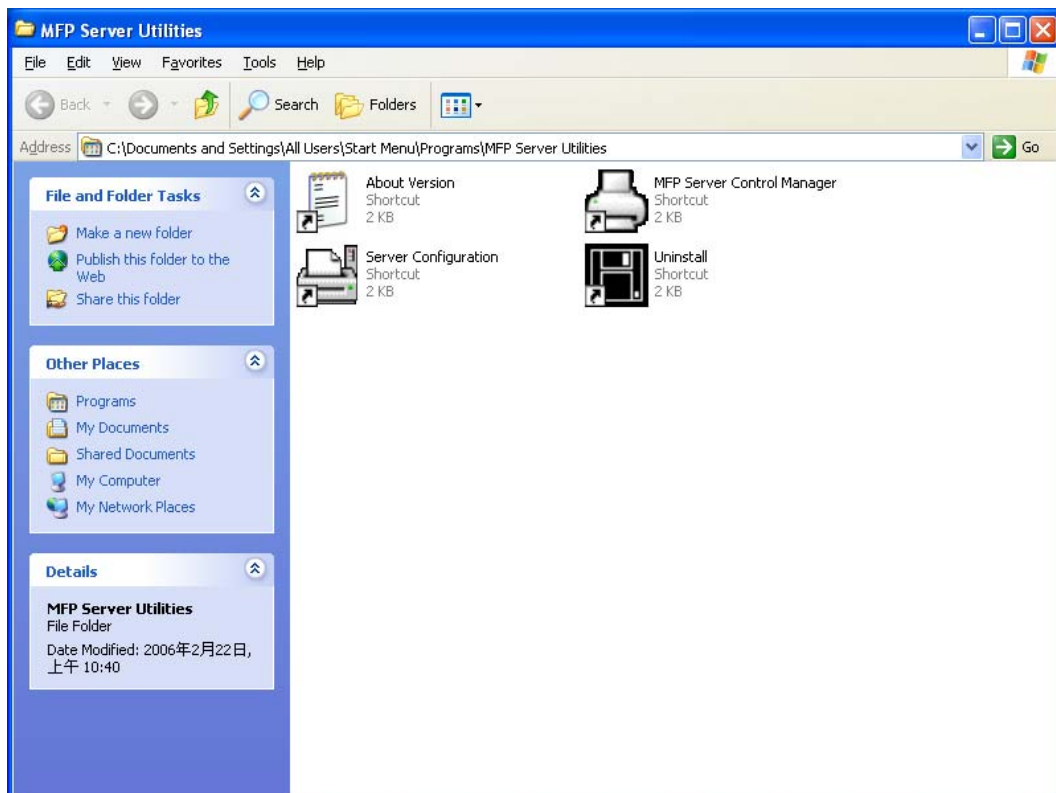
After the installation is completed, there will be three utilities and a text file in the MFP Server's Program folder.

MFP Server Control Manager – Allows you to manage the connection between the MFP and your computer for sharing MFP function.

Server Configuration – Allows you to configure the MFP Server's IP Address, network protocols and other advanced features. It also allows you to manage the MFP Server.

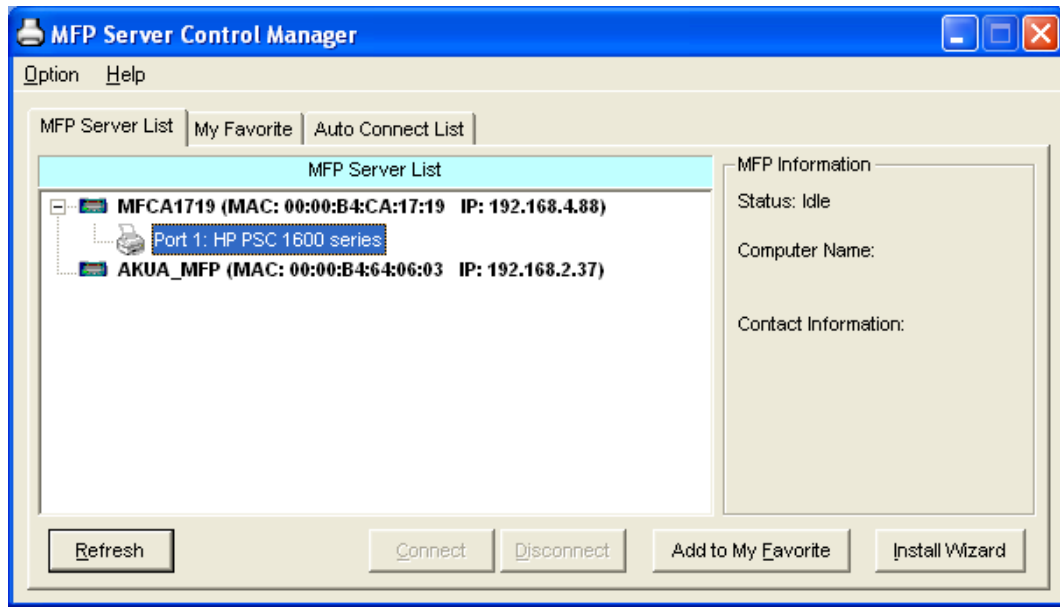
Uninstall – Assistant for removing all installed MFP Server software programs.

About Version – Display the version of each utility including in the MFP Server software programs.

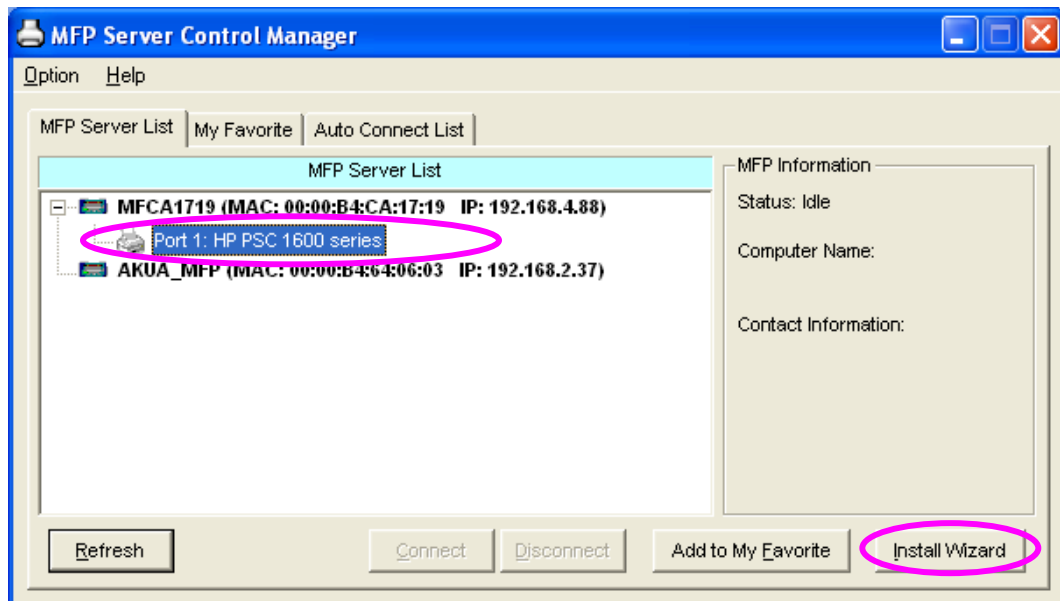


3.3 Install the MFP Drivers/Utilities

When the installation is completed, the “MFP Server Control Manager” will be popped up. It will automatically find the MFP Servers and the connected MFPs in the network and show it in the “MFP Server List”. To start installing the MFP Drivers/Utilities, please follow the steps below.

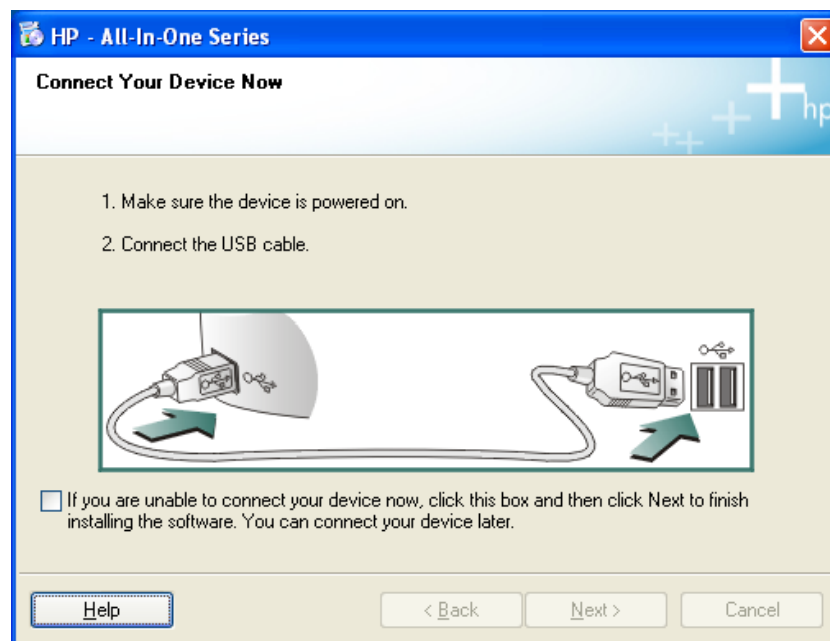
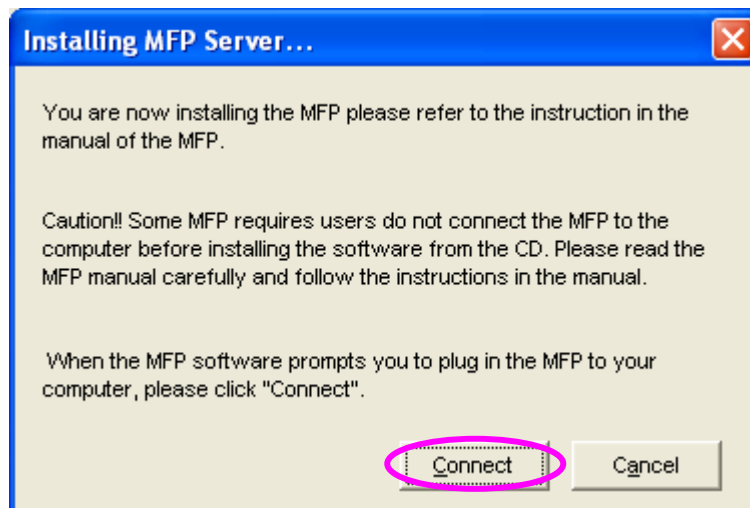


1. Select the MFP that you want to install in the “MFP Sever List” and click “Install Wizard”.

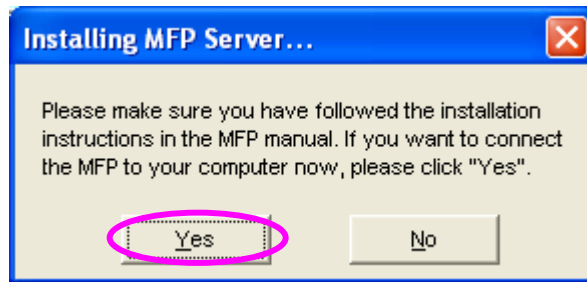


2. The following message is displayed to warn you that you have to follow the installation instructions in the manual of the MFP. If the MFP is requiring you to connect the MFP to your computer directly, please click “Connect”.

Tip: Some MFP requires users to install the drivers/utilities before connecting the MFP to your computer, please make sure you have followed the instructions of MFP. When the MFP requires checking if you have connected the USB cable to MFP and your computer, please click “Connect” to create the connection. Please refer to the below illustration of “HP ALL-In-One Series” as an example.



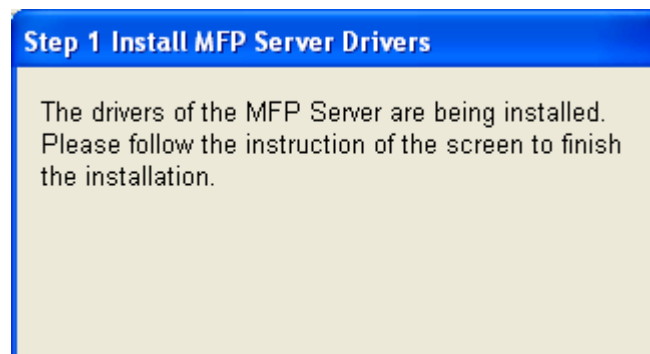
3. If the MFP has required you to plug the USB cable between the MFP and your computer, please click "Yes".



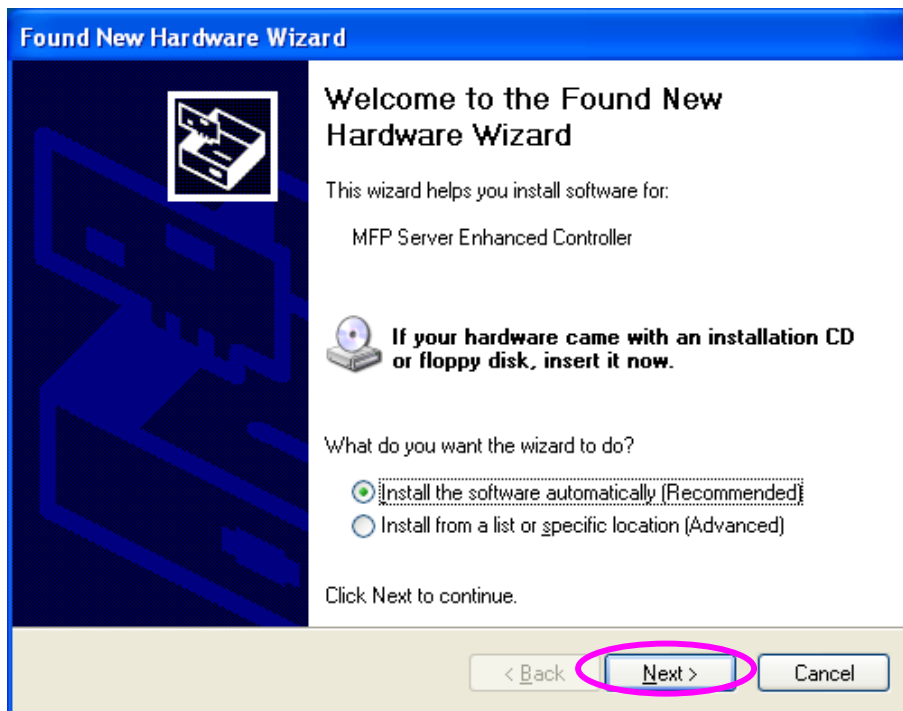
4. Before creating the connection, you have to install two kinds of drivers: the drivers for MFP Server and the drivers for MFP. Please click "Next" to start the installation.



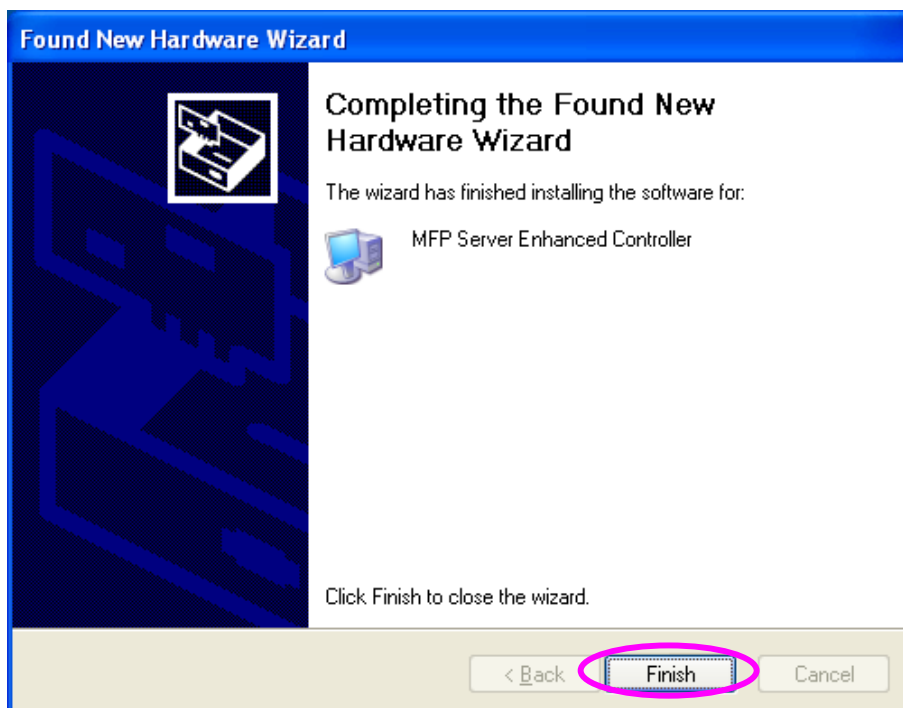
5. When you are installing the MFP Server Drivers, the following message will be displayed to notify you. When the MFP Server drivers are all installed, the message will be disappeared automatically.



6. Select “Install the software automatically (Recommended)” to auto install the “MFP Server Enhanced Controller” driver, then click “Next”.



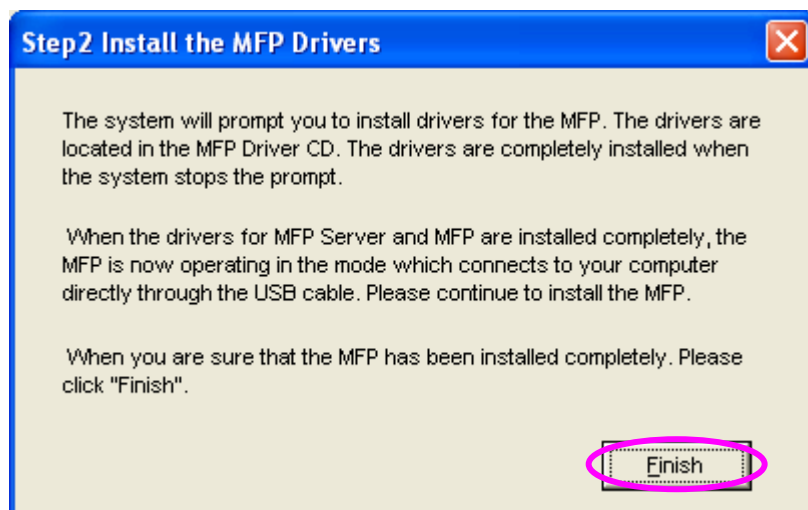
7. The driver is installed automatically. Click “Finish” to complete this driver installation.



8. The following message is displayed to remind you that you are now installing the MFP Drivers. When you are sure that the MFP has been installed completely, please click “Finish”.

Tip 1: *The Windows system will auto detect the MFP drivers need to be installed. Please follow the pop-up screens to install the drivers, when the system stops prompting the drivers are all installed.*

Tip 2: *When the two steps have finished, the MFP is now connected to your computer directly. Please continue to install the MFP by following the steps in the manual of MFP.*

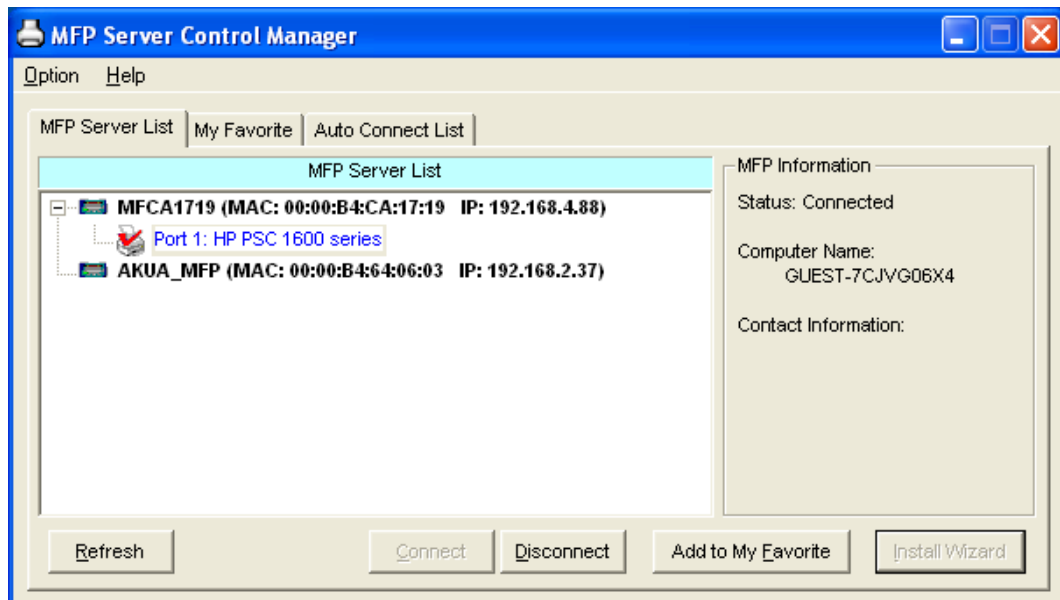


4. Using the MFP

After you have followed the install wizard to finish the MFP installation, the MFP is now connected to your computer. You can start sharing print, scan or card reader functions provided by the MFP.

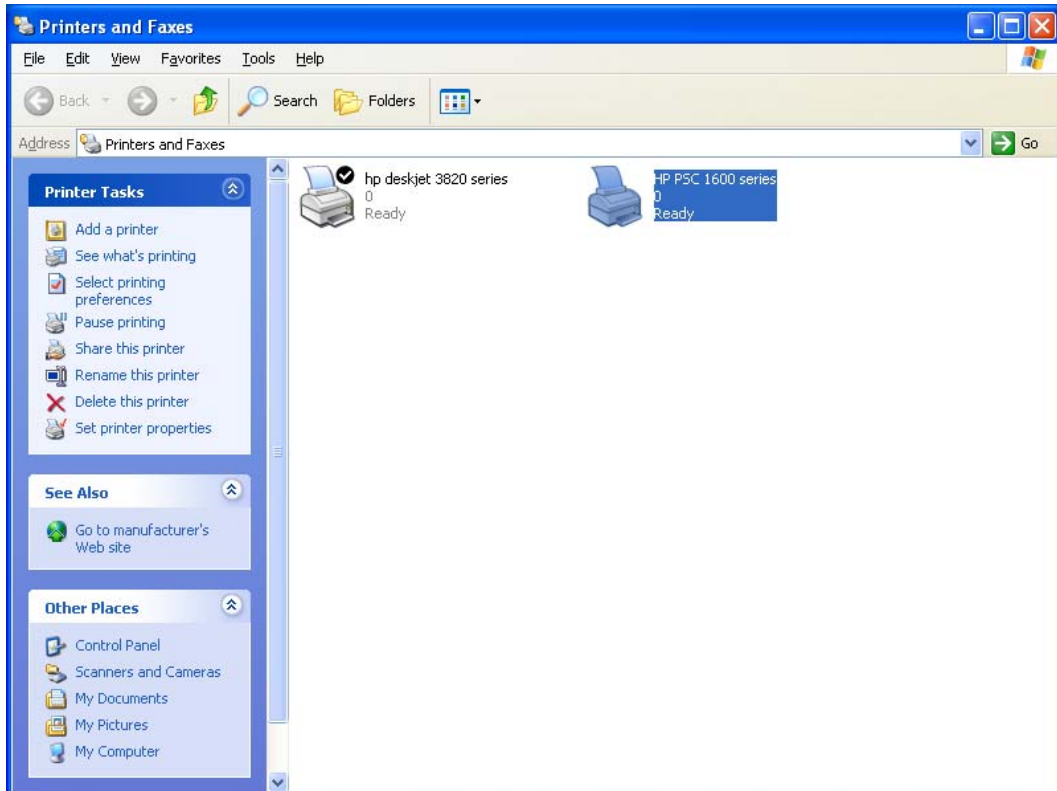
Tip 1: If you have finished using the MFP, please click “Disconnect” to release the MFP. Another users can’t use the MFP until the MFP is released.

Tip 2: It doesn’t always have to manually click “Disconnect” to release the MFP. There is alternative of releasing device by enabling “Idle Timeout Setting”. The device will be released after a period of idle time. Please refer to Section 6.5.1 in the manual for more information.



4.1 Share Print

The MFP will be added to “Printers and Faxes” in the Windows after the MFP is installed. When you have connected to the MFP by clicking “Connect” in the “MFP Server Control Manager”, the MFP Server will auto create the connection between the MFP and your computer and then you can print a document just follows the same steps as usual.



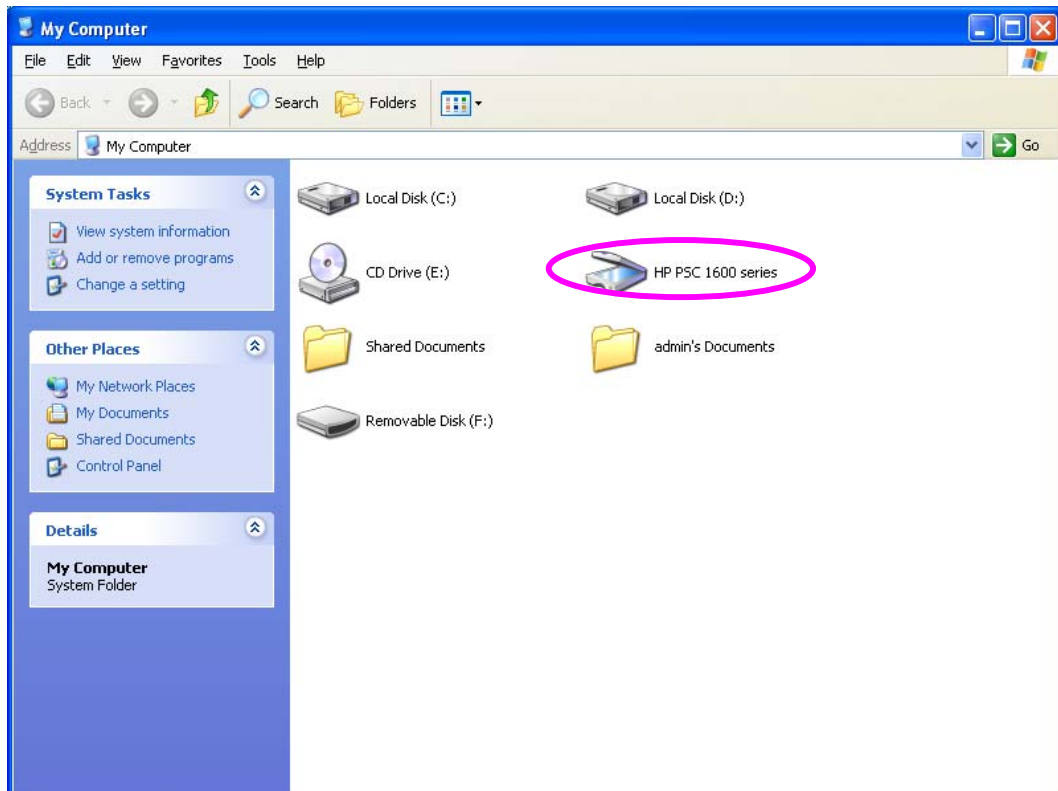
4.2 Share Scan

Most of the MFP provides scan utility for users. You can scan pictures or documents through the utility. In Windows XP, user can also scan from Windows XP scanning utility.

An example: HP 1600 Series Utilities



Windows XP Scanning Utility



4.3 Share Card Reader

If the MFP supports card reader function, you can read the files from the plugged card reader through the MFP Server.

